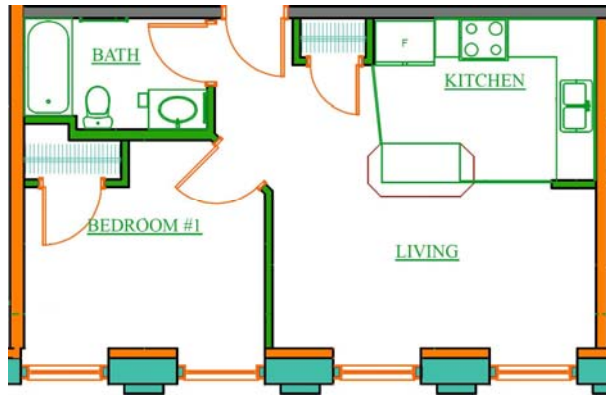
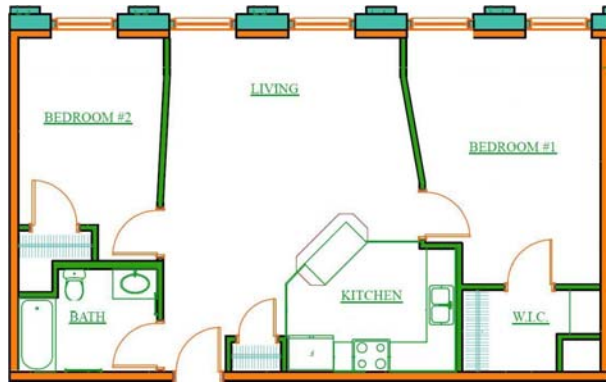


# FLOOR PLANS

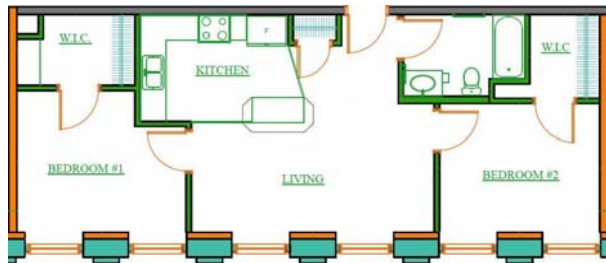


Please note that the floor plans are not drawn to scale. Unit sizes and designs will vary depending on location.

One Bedroom Unit



Two Bedroom Unit (A)



Two Bedroom Unit (B)



Three Bedroom Unit

# JAFFREY MILL APARTMENTS



603-641-2163



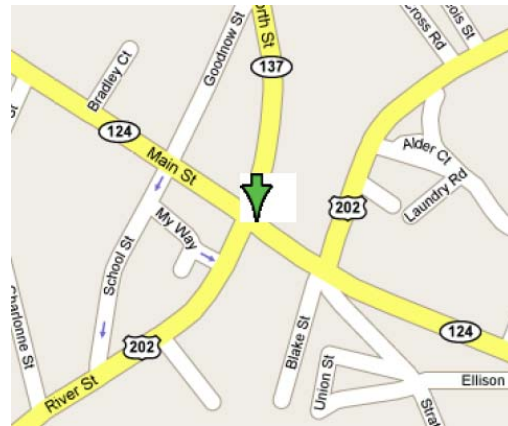
# YOUR HOME IS ON THE RIVER.....

Located in Jaffrey's Main Street Community District, Jaffrey Mill is situated on the Contoocook River. This historic mill building has been converted into thirty modern apartments in a three-story setting. There are one, two and three-bedroom sized apartments available. All apartments include a tenant storage area in the basement, which is included in the rent. Several apartments are accessible to persons with disabilities.

*All units feature islands in each kitchen*



## Convenient Location



Jaffrey Mill is at a perfect location in the downtown area of Jaffrey, yielding short walks to nearby shops and restaurants.

## INCOME LIMITS APPLY.

### PROPERTY AMENITIES

- Community Room
- Tenant Storage Units included
- Walk in Closets in most units
- Ample On-Site Parking
- On-Site Maintenance
- 24-hr Maintenance
- On-Site Laundry
- Elevator
- Convenient Setting
- Heat and Hot Water Included

## AT RENTS YOU CAN AFFORD

Rental rates at Jaffrey Mill are very affordable, ranging from \$604 to \$808 per month. Heat and Hot Water are included in the rent!



For more information, please contact:

**Stewart**  
PROPERTY MANAGEMENT

**603-641-2163**

(TDD access)

Applications can also be obtained on the Internet at:

[www.stewartproperty.net](http://www.stewartproperty.net)

Jaffrey Mill is a Great Bridge Property.

**GreatBridge**  
PROPERTIES